



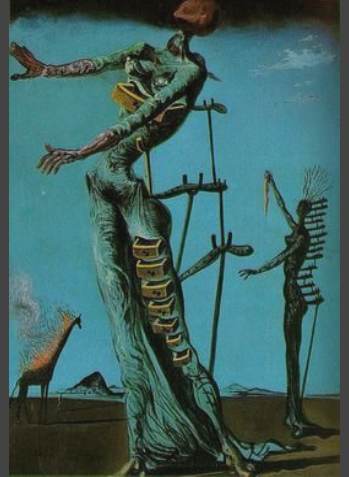
Comparative Study

Serena Medrano

In this comparative study I will focus on analyzing three art works by international artists, Salvador Dali and Pablo Picasso. Throughout the study I will compare and contrast not only the use of **line**, **movement**, and **space**, but also, the culture of the art. By providing the cultural background of the art pieces, the audience will understand how these artists were influenced by their society, emotion, and political views.

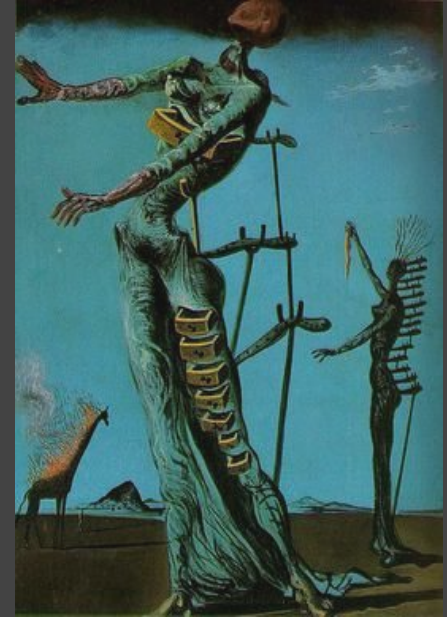
Evaluation of Cultural Significance of Salvador Dali

Inspired by psychoanalysis, surrealism was meant to explore the unconscious mind. Salvador Dali made paintings that made his audiences rethink reality and how things are. He did think by making his images dreamlike and seem like a hallucination. Symbols were a played a major role in surrealism since the subjects were always distorted.



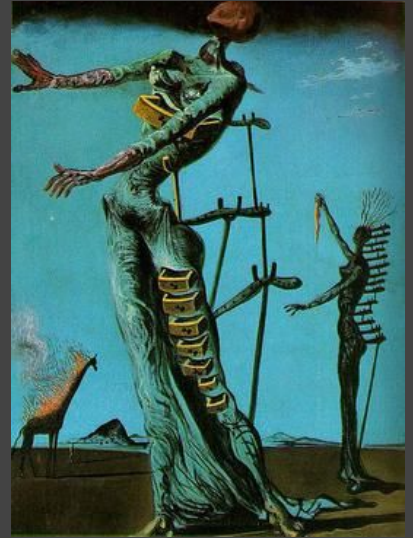
Analysis of Function and Purpose of Salvador Dali

Inspired by Sigmund Freud in this painting there are several drawers that are open on these two ladies. Freud believes that the only way to open the drawers of the mind is through psychoanalysis. The giraffe, in the background, was a symbol of premonition of war.



Interpretation of Formal Qualities of Salvador Dali

The use of warm color in contrast to the giraffes dark value makes the object stand out more. The light blue background makes the dark value forms eye catching. There is texture on the clothes and on the skeleton body created by using lines that flowed off into the direction Dali wanted the wind to be blowing. The value on the elements expresses the light source is coming from the left side of the painting where the giraffe is coming from and where the ladies are going to.



Evaluation of Cultural Significance of Pablo Picasso

Two of Pablo Picasso's earlier art periods in his life were the Blue and Rose Period. The Blue period took place between 1900-1904, while the Rose Period took place between 1904-1906. At the start of his Blue Period he was diagnosed with severe depression, but helped him create many successful paintings. Carlos Casagemas, Picasso's friend, died from suicide in Paris, 1901.



Analysis of Function and Purpose of Pablo Picasso

During the Spanish Civil War the Nazi's bombed the Basque town of Guernica. This piece makes a political statement by using propaganda to show the horrible things that happen during war. That war can even affect innocent children as well.



Analysis of Formal Qualities of Pablo Picasso

With the high contrast and no hues in the pieces it makes the audience depict the horror that is happening in the piece. This happens because then the audience doesn't get distracted by all the other colors and can focus on just the subjects.



Interpretation of Function and Purpose

During Picasso's Blue Period he had more empathy for others, especially since he just lost one of his close friends. This painting was made very closely to the time he lost his friend. It was a piece that expressed how he felt at the time. He saw the more poor people are someone he could relate with.



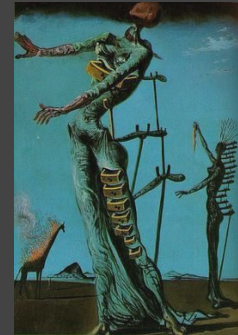
Analysis of Formal Qualities of Pablo Picasso

The way Picasso uses lines in his painting is the vertical lines created by the neck of the guitar and the homeless man's neck and his arm. Those straight lines create a triangle in the piece forcing the audience to move their eyes around the painting. There is emphasis in the change of hues from cool to warm since the guitar is the only warm hue, it symbolizes that his were the man can find some comfort and happiness. There are mainly cool hues used to represent the Picasso's depression during his Blue Period. Also, the form of body are exaggerated creating sadness and helplessness



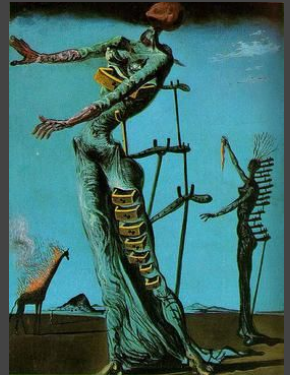
Comparing Function/Purpose, Culture, and Formal Qualities Between Artists

Both were able to express their feelings and the things they want the world to notice as well. They both used unrealistic drawings of peoples' bodies. The hues used were very minimal and the values were dark to convey negative emotions.



Comparing Function/Purpose, Culture, and Formal Qualities Between Artists

Both of the artists used cool hues to express emotions. Picasso used warm and cool hues to emphasize his emotions on what was important. Similarly with Dali using warm hues to showcase the important parts of the subjects. Also, both artists used exaggerated forms of the human body by making their arms and legs longer than normal.



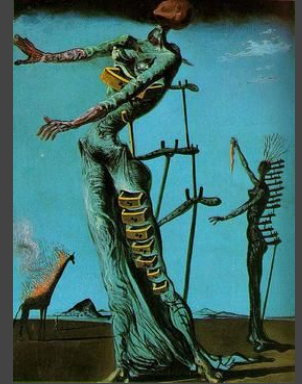
Comparing Function/Purpose, Culture, and Formal Qualities Between Artists

Picasso and Dali both use minimal elements or texture in their pieces. Also they make their backgrounds solid hues. They used their negative feelings to create their pieces to convey a message of awareness.



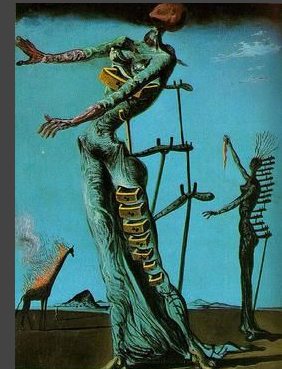
Contrasting Function/Purpose, Culture, and Formal Qualities Between Artists

Picasso used more real life and what was happening in the world while Dali used more of his own ideas and his beliefs in his work. Dali had used blending techniques with different hues. He also created texture and surrealism. Picasso didn't use different hues and used his piece for propagande. There was no blending or texture used in Guernica.



Contrasting Function/Purpose, Culture, and Formal Qualities Between Artists

Picasso used techniques from his blue period to create his piece while Dali used techniques from surrealism for his piece. Dali's piece had depth that was created and not just one subject. Picasso used one subject and made him take up the whole painting.



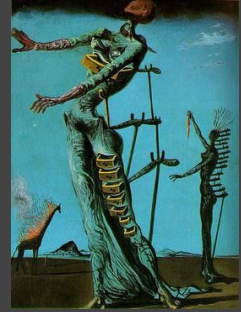
Contrasting Function/Purpose, Culture, and Formal Qualities Between Artists

Guernica didn't have any blending or hues used. The Old Guitarist used cool hues and some warm hues. Guernica was used for many people to see while The Old Guitarist wasn't really meant for a big audience to see.



Comparing & Contrasting Functions/Purpose and Formal Qualities Between My Artwork and Dali

The giraffe, in the background, was a symbol of premonition of war. In *Agony*, I am trying to show that I have a lot of premonition of my life which is caused by many subconscious thoughts including fear, anger, and sadness. It is that the skin was hiding secrets. I also wanted this as a main idea in my piece because I wanted to show that I hide a lot of things that go on in my mind, but only when I am suffering great pain will my true emotions show. I would be able to demonstrate this by using burns or cuts on the face, to mirror the peeling of the skin on the arm in *The Burning Giraffe*.



Comparing & Contrasting Functions/Purpose and Formal Qualities Between My Artwork and Picasso

In Guernica I was captured by the agony at first. After I did more research I really enjoyed how the piece talked about war and Picasso's reaction on it. Instead of taking aspects visually from this piece I wanted to use the ideas of the meaning. I liked the take of painting your reaction to a certain topic that can affect a lot of people. Both used for propaganda by using symbols of the topic. I used many used while Picasso didn't.



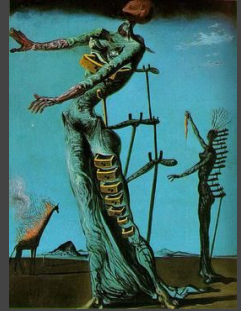
Comparing & Contrasting Functions/Purpose and Formal Qualities Between My Artwork and Picasso

Both pieces use cool hues to express emotion and then one object with warm hues to portray the sense of security. My piece was horizontal and asymmetrical, but Picasso's piece was vertical.



Comparing & Contrasting Culture Between My Artwork and Dali

Instead of making a painting I decided to experiment with a different medium. I used dry point and used a lot of negative space to express the emptiness in me. Both of the pieces used a female subject except mine only used one and Dali used two.



Comparing & Contrasting Culture Between My Artwork and Picasso

Since these were all different mediums I could not use the exact same techniques. I did use the concepts of the Blue Period by using cool hues even though I was unable to use the same blending techniques.

